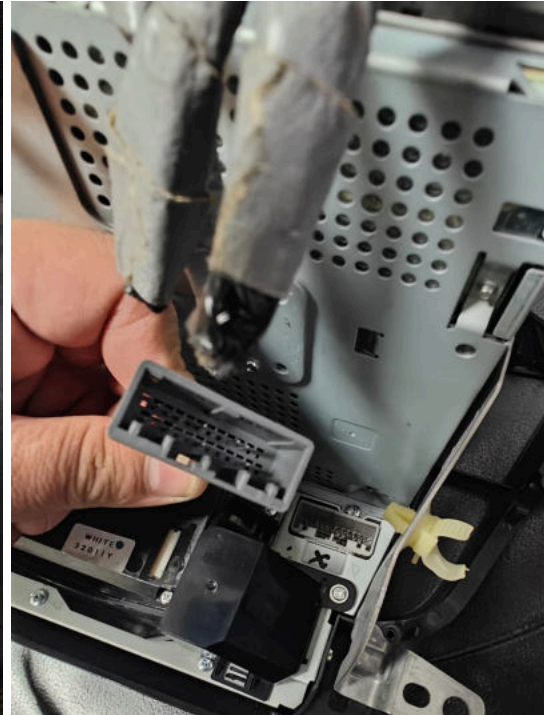
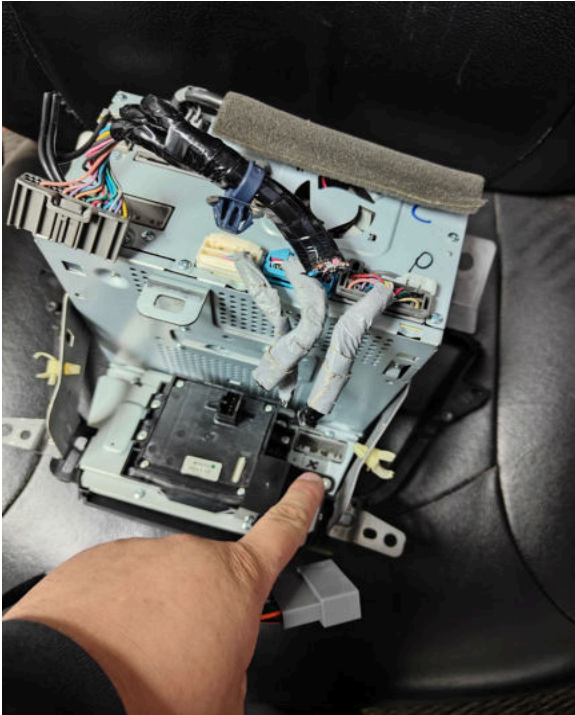
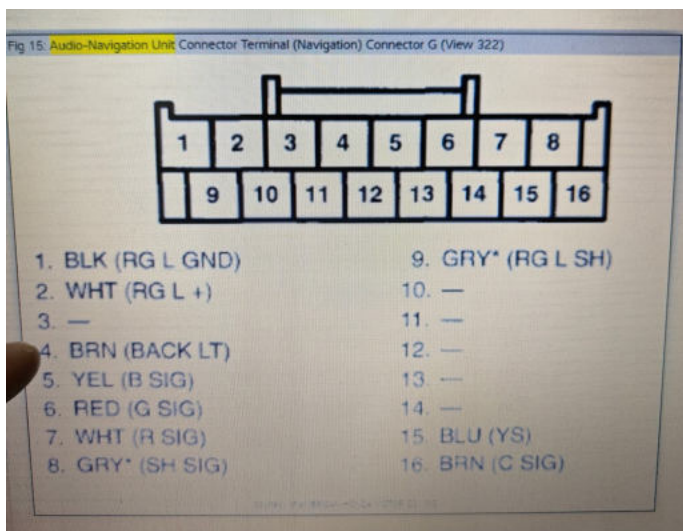


1. **Climate control harness.** This harness is used to convert the navigation equipped Acura to a Non Navigation display to show the climate information. The LCD display is removed and instead the non navigation display is connected. They fit into the same slot but used different connectors. The connector for the climate information is a **24 Pin gray connector found next to the control knob of the navigation (Figure A)**. The 16 pin connector is connected into the new screen(Figure B). You will unplug the 24 pin connector from the navigation and plug into the harness. Then snake the wire up to the new screen and connect it.



2. Backup Camera Retention Harness. The 2009-2011 Acura TL has a 32 pin connector connected to the main display that carries the camera connection wires. The 2012-2014 Acura TL has a 36 pin connector connected to the main display that carries the camera connection wires. The TSX has a 28 pin connector that is pinned differently depending on the year. **The OEM camera must be powered by 6 volts, a converter is wired in already for your convenience.** The 32 pin and 36 pin connectors carry the reverse signal but when you remove the OEM radio the signal is not there anymore so you must wiretap. **If your Acura from 2009-2014 you will need to wire tap the brown wire on the 16 pin connector shown below.** Pin 4 is the reverse light trigger, brown wire. The RCA is connected to your radio's Rear camera input.



3. ELS Amplifier Retention & PNP Harness. If you ordered the ELS amplifier interface you will need to connect it to switched 12v-red, ground- black, ELS+-green, ELS- green/black, ELS Shield-brown and then connect the knob to the interface without the knob connected it won't work. **You can mount the knob by drilling a small hole and pushing the knob from the back into place and then securing it into place with the 10mm nut and washer.** If you bought a plug and play harness the ELS interface is wired in and it's going to the correct connector for your car. The pnp harness will also include the connection for the AXSWC and the other necessary connections for sound and power.

The way the ELS interface works is it feeds 2 channel audio FL and FR to the factory amplifier and the factory amplifier up-mixes the audio to all the speakers. So if you try to fade from front to rear then you will lose sound. The audio most always comes from the FL and FR outputs of your aftermarket radio. This means you must connect the FL rca to your FL output and the FR rca to the FR output. Then the RL to RL and RR to RR. There is no individual sub connection or center connection. If you wish to increase the sub volume the knob has two controls the can move one controls the volume and the other the bass level. The one that controls the volume is used inline with the cap so you will need to remove the cap and adjust the subwoofer level. The subwoofer level is only adjustable if the volume is not maxed out.

Volume. You can use the factory steering wheel controls to control the volume of the aftermarket radio along with the controls on the face of the radio. You should try to limit the volume of the aftermarket radio to 30 max and use the knob to control the rest of the volume. Do not max out the radio volume and the knob volume you could damage your factory amplifier. It's best to set the radio at 27, if you want to go lower use the steering wheel controls and if you want to go higher use the knob supplied with this kit. If you leave the knob fully maxed out you might hear a pop when you turn the car on and off.

Connectors not shown are not used in the installation; they are left unconnected.



car side connectors plug into factory plugs

This connection is for the AXSWC



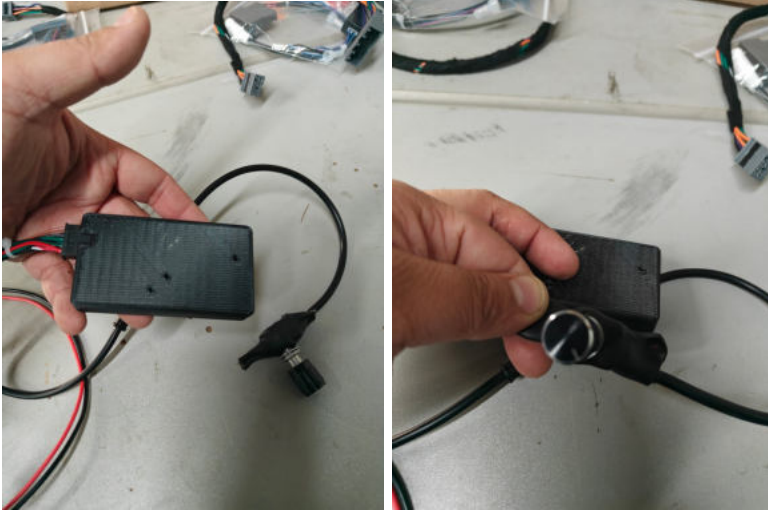
This one is for the camera and the wiretapping of the reverse trigger. (red- 12v, black-ground, brown-reverse)



All these RCAS must be connected



ELS interface and the control knob.



The entire harness example. **The antenna adapter has two connections: an AM and the other FM.** You will only use one and the other will be left disconnected.

